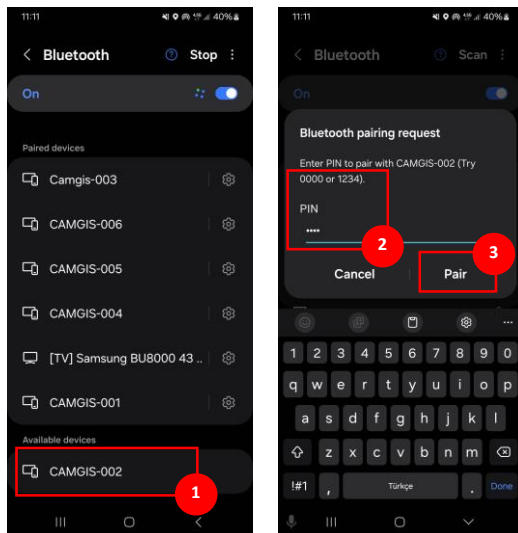


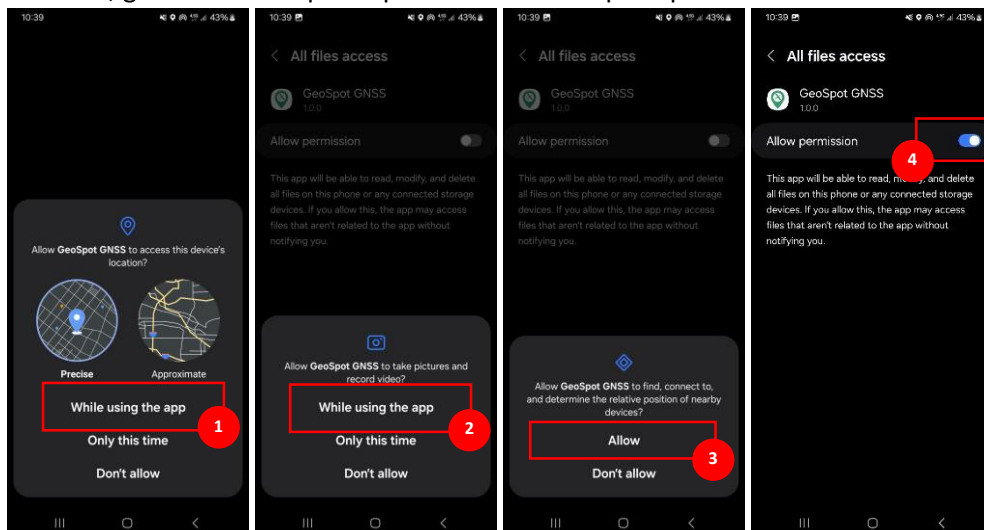


Quick Start Guide

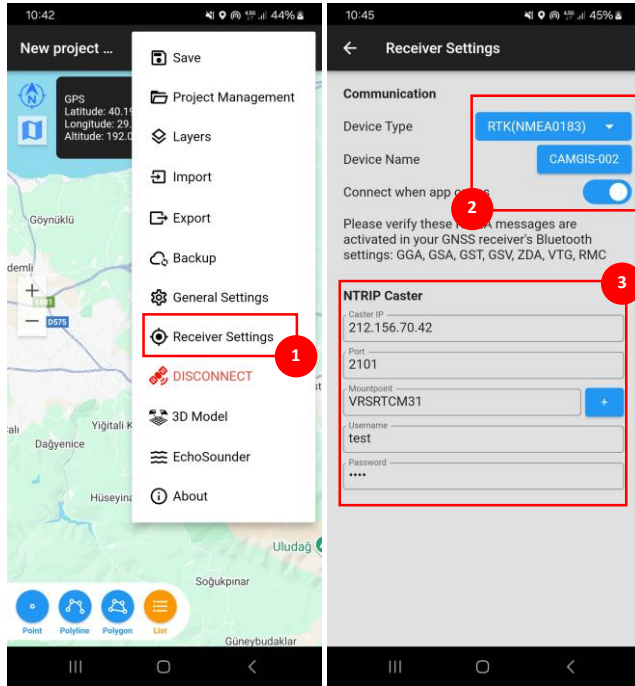
1. Make sure that Mobile Data, Location and Bluetooth are enabled on the Android device.
2. Go to Bluetooth Settings on your Android device and pair your GNSS Receiver.



3. On the GNSS receiver, the following NMEA sentences must be enabled via Bluetooth output: GGA, GSA, GSV, ZDA, VTG, RMC. The data transmission rate can be set to 2 Hz (500 ms). (The default is usually 1 Hz.)
4. Download the GeoSpot GNSS app from <https://geospot.com.tr/download/> and install it. Once installed, grant all the required permissions when prompted.

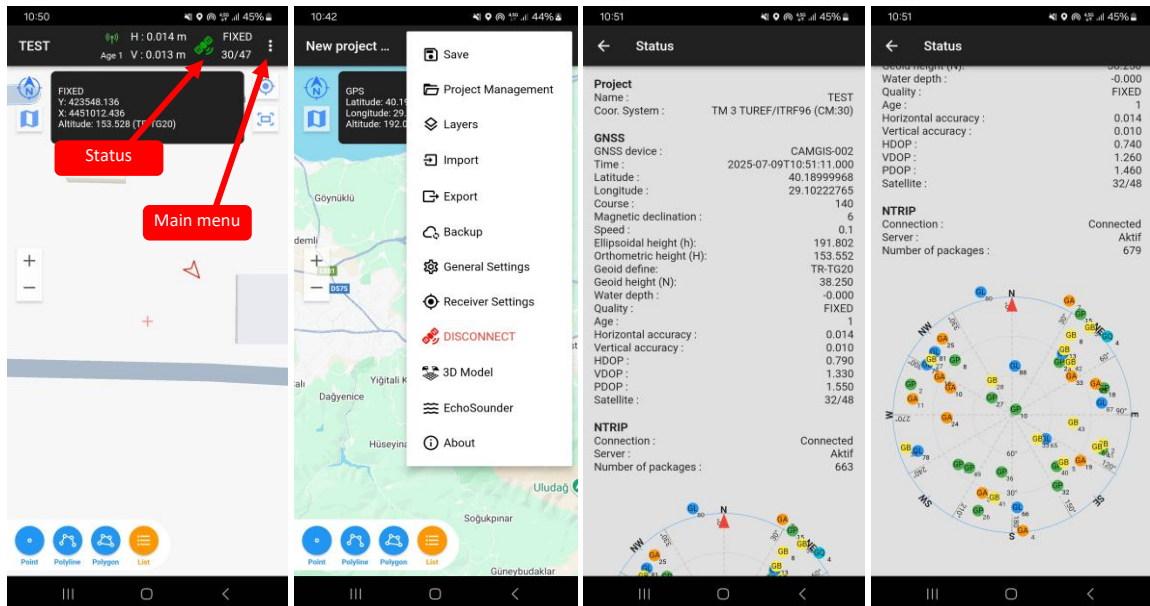


5. When the app is first launched, the License Manager screen will appear. Please type license key and confirm.
6. By default, the app connects to the Internal GPS. To change this:
 - Go to the Receiver Settings page from the main menu.

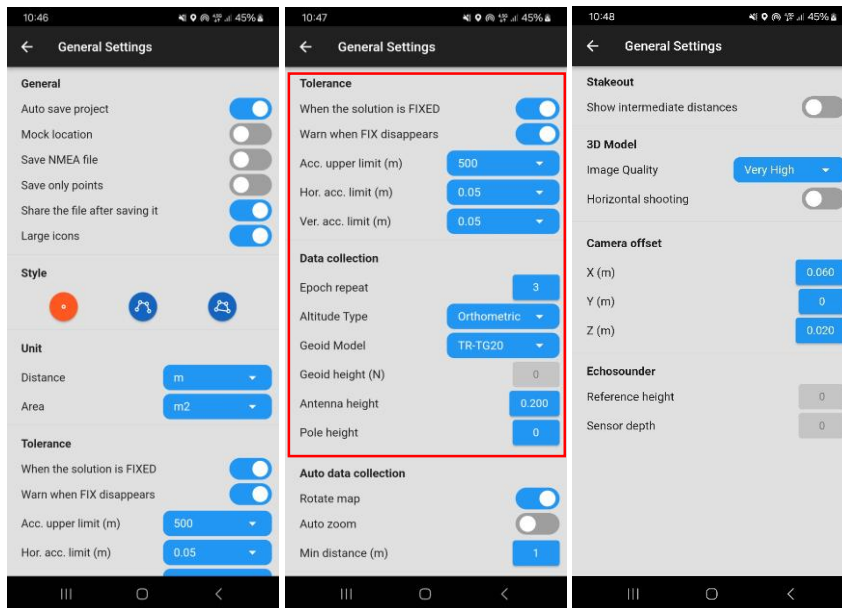


- Select RTK as the Device Type, then choose GNSS Receiver.
- Enter your NTRIP connection details.
- After completing the settings, close the app from the background and reopen it.
- The app will now automatically connect to your GNSS receiver.

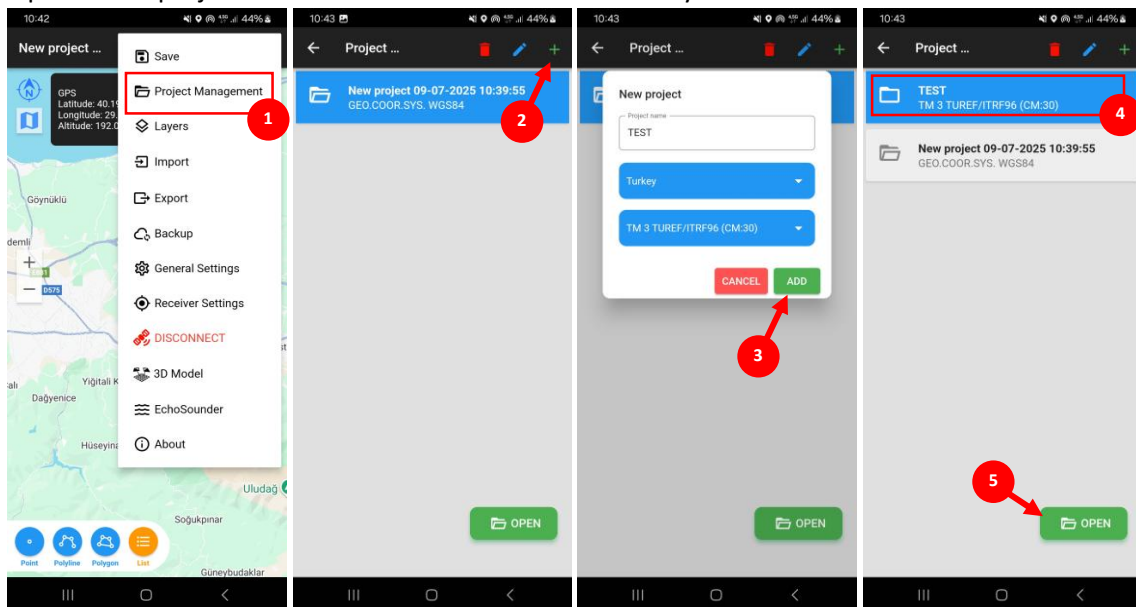
7. Once the GNSS receiver status is FIXED, the device is ready for measurement.



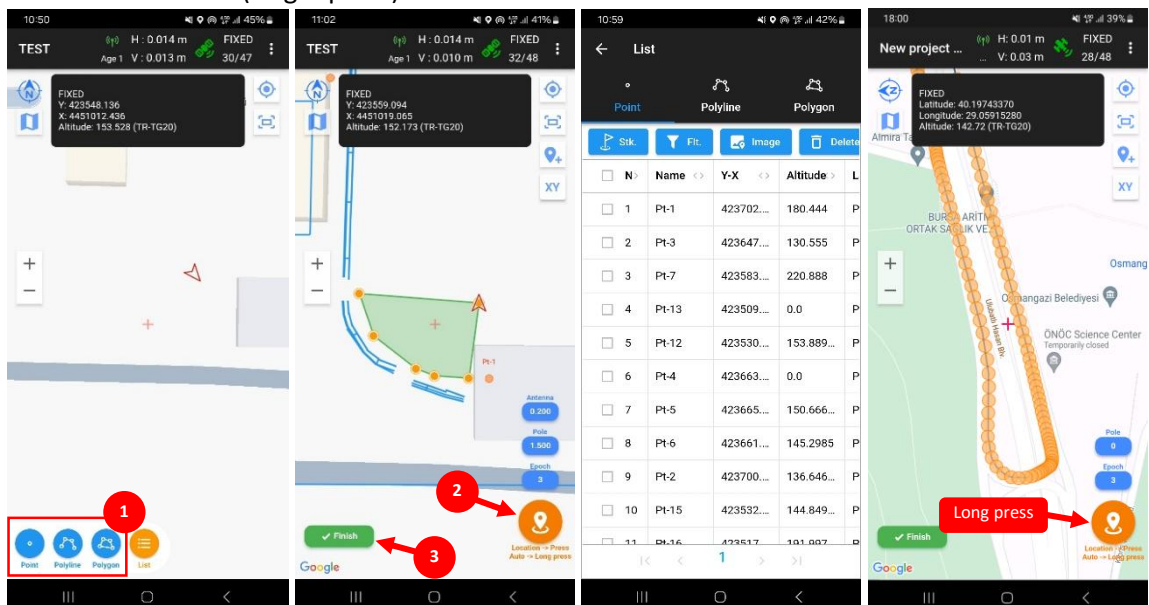
- Prior to data collection, go to the General Settings page and choose your altitude type and geoid model.



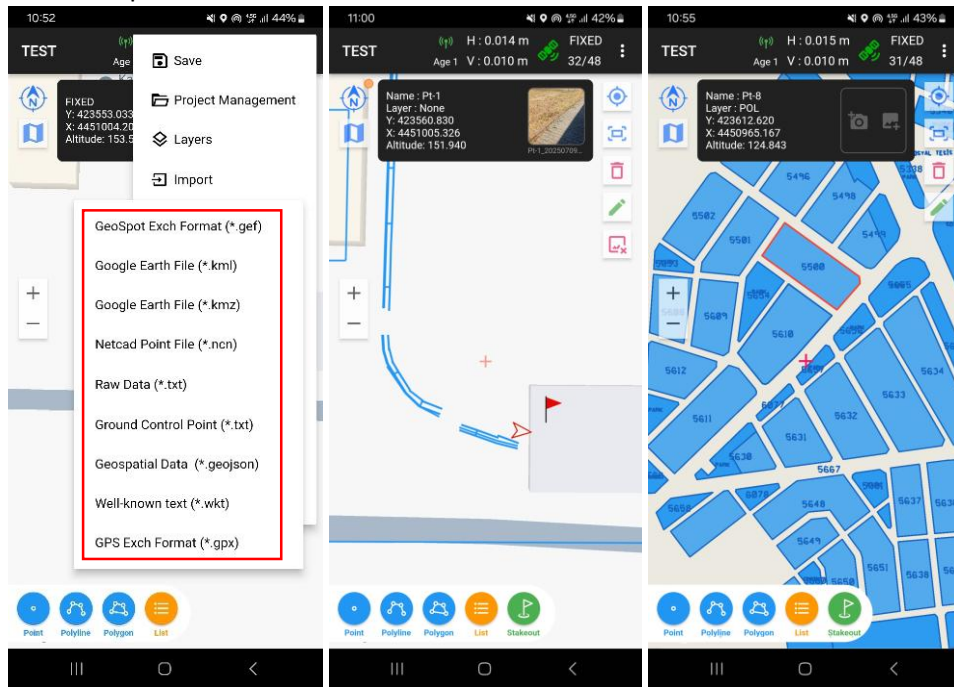
- Open a new project and choose the desired coordinate system.



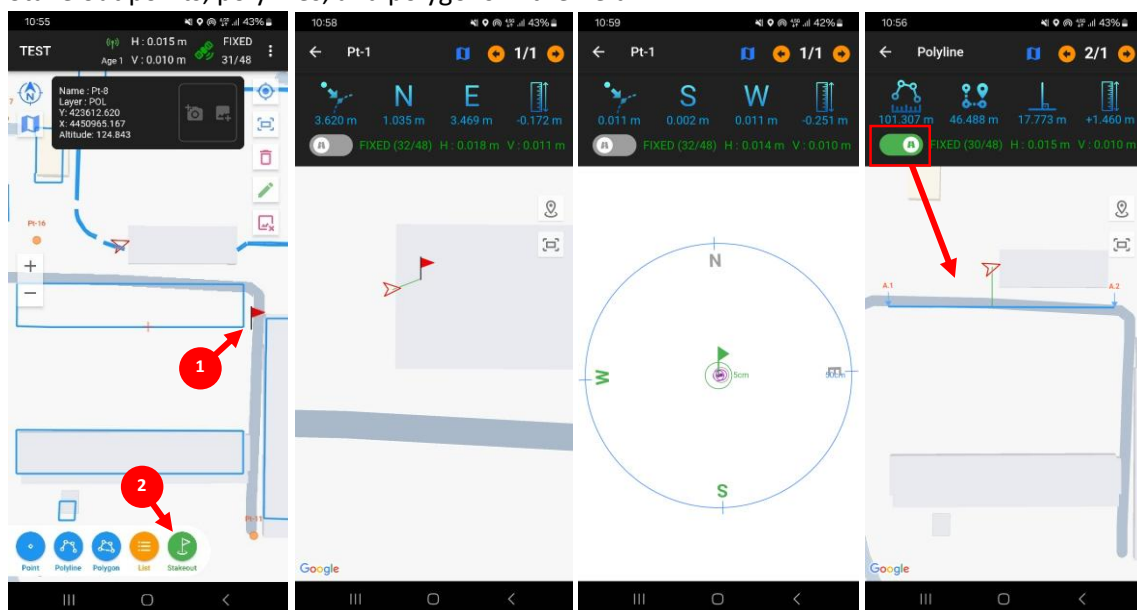
- Collect data in manual (single-point) mode or enable continuous auto-collection.



11. You can import multiple file formats. To import any DXF version or convert between formats, utilize the "GeoSpot GNSS Data Converter" tool.



12. Stake out points, polylines, and polygons in the field.



Contact us for more information:

📍 <https://geospot.com.tr>

✉ info@geospot.com.tr